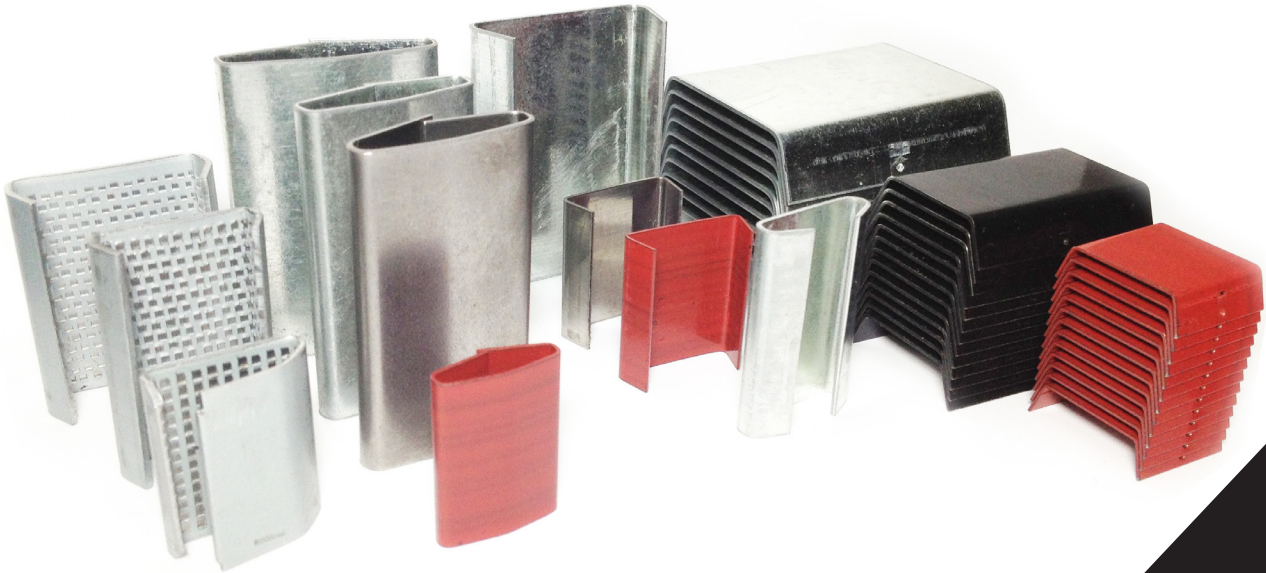


# Metal Seals



## Metal seals for steel strapping and plastic strapping

### Available Size for strap

- Width : 12.7mm(1/2") to 32.0mm(1 1/4")
- Thickness : 0.5mm(.020") to 0.9mm(.035")

### Seals Type

- Push Type Seals
- Snap-on Seals (Open Type)
- Nestack Seals (Magazine Type)
- Open-flange Seals (Semi-Open Type)
- Thread-on Seals (Semi-Push Type)
- Serrated Seal(for PET strap)
- Serrated/Snap-on(for PET strap)
- Non-Serrated(for PP strap)

### Materials for Seals

- CR(Ungalvanize)
- Galvanized
- Painted
- EGI (Electrolytic Galvanized Iron) for PET Strap

### Packing

- Carton Box (500pcs ~ 10000pcs)
- Poly bag (500pcs ~ 10000pcs)



## METAL SEALS

OVR Metal Seals for Strapping is...

OVR Metal Seal produces by the low carbon steel of superlative quality in Korea and when have sealed on Strappings maintain stable sealing state.

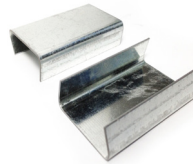
Also, we have a molding design and mold work technology, so products designed by human body engineering for when sealing work, they are able to work with minimum arms strength.

OVR Metal Seals will meet all your requirements for strapping.



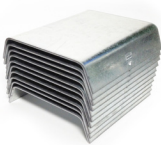
### Push Type Seals

This Seal is most popular at strap sealing, and used in demands high tension package sealing. And need pre-threading.



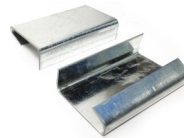
### Snap-on Seals (Open Type)

This seal sealing on Strapping after tensioning by tensioner. When Strapping and package product's indiscrete space are wide and Sealing position is free use. Workability is high than other types seal.



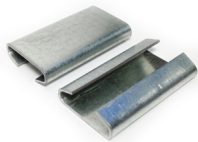
### Nestack Seals (Magazine Type)

This seal is used Auto sealing machine or loadable portable pneumatic combination tool (Loadable this seal on tool).



### Open-flange Seals (Semi-Open Type)

This seal is a product that has advantage of Snap-on Seal and Thread-on seal. Also, needs no pre-threading



### Thread-on Seals (Semi-Push Type)

Pre-insert to the Strap ends before tensioning work and after sealing by crimper This seal used, when there is volume elasticity in product to wrap or Strapping tension is not required greatly.



### PET Strapping seals

- Serrated Seal
- Serrated/Snap-on
- Non-Serrated(for PP strap)

\*Material : EGI (Electrolytic Galvanized Iron)



### Surface Treatment :

- C/R(unpainted)
- Painted (Red)
- Galvanized
- EGI(Electric Gavanized Iron)

Thickness 0.4mm ~ 0.6mm available Red painted and C/R(unpainted)  
Thickness up to 0.8mm available Galvanized and C/R(unpainted)



## Metal Seals for Steel Strapping

Strap size		Seal Type	Spec. (T x W x L)mm	Standard Package No. of seals	Approximate Shipping Weight Kg / ctn	Ungalva ( C/R )	Paint	Galva	
inch	mm								
3/8	9.5	Nestack	0.5x9.5x21.8	5,000	7.6	O	O	N/A	
		Snap-on	0.5x9.5x28.5	2,000	4	O	O	N/A	
		Push	0.5x9.5x26.5	2,000	9	O	O	N/A	
1/2	12.7	Nestack	0.6x12.7x19	10,000	24.2	N/A	O	N/A	
			0.5x12.7x28.5	6,500	19.8	N/A	O	N/A	
			0.4x12.7x22	5,000	8	N/A	O	N/A	
		Snap-on	0.5x12.7x28.5	1,000	3	O	O	N/A	
5/8	15.9	Push	0.6x12.7x28.5	1,000	4.5	O	O	N/A	
		Nestack	0.6x16x19	5,000	14	O	O	N/A	
		Snap-on	0.5x16x28.5	1,000	3.5	O	O	N/A	
		Thread-on	0.5x16x28.5	1,000	4	O	O	N/A	
3/4	19.0	Push	0.6x16x28.5	1,000	5.8	O	O	N/A	
			0.5x19x28.5	5,000	20	N/A	O	N/A	
			0.8x19x25	3,000	18	O	O	N/A	
		Snap-on	0.8x19x38	2,000	21	O	O	N/A	
			0.5x19x28.5	1,000	5	O	O	N/A	
		Thread-on	0.6x19x28.5	1,000	6	O	O	N/A	
			0.9x19x38	1,000	10.7	O	N/A	O	
			Push	0.6x19x28.5	1,000	6.6	O	O	N/A
				0.9x19x38	1,000	14	O	N/A	O
0.9x19x45	1,000	17		O	N/A	O			
1	25.4	Snap-on	0.9x19x55	1,000	20	O	N/A	O	
			0.9x19x55	1,000	20	O	N/A	O	
		Thread-on	0.9x25.4x55	500	11.2	O	N/A	O	
			0.9x25.4x55	500	11.2	O	N/A	O	
1 1/4	31.8	Snap-on	0.9x25.4x45	1,000	20	O	N/A	O	
			0.9x25.4x55	500	12.5	O	N/A	O	
		Nestack	0.9x32x50	1,000	22	O	N/A	O	
			0.8x32x38	2,000	26	O	O	N/A	
		Snap-on	0.9x32x55	500	13	O	N/A	O	
		Thread-on	0.9x32x55	500	13	O	N/A	O	
			0.9x32x55	500	16	O	N/A	O	
		Push	0.9x32x50	500	14	O	N/A	O	
0.9x32x45	1000		25	O	N/A	O			
		NEW USLM	1.1X32X75	500	20	N/A	N/A	O	

## Metal Seals for Plastic Strapping

Strap size		Seal Type	Spec. (T x W x L)mm	Standard Package No. of seals	Approximate Shipping Weight Kg / ctn	Ungalva ( C/R )	Paint	Galva
inch	mm							
1/2	12.7	Serrated	0.8x12.7x29	1,000	6	N/A	N/A	O
5/8	16.0	Serrated	1.0x16x29	1,000	9	N/A	N/A	O
3/4	19.0	Serrated	1.0x19x29	1,000	10	N/A	N/A	O
		Non-serrated	1.0x19x29	1,000	10	N/A	N/A	O
1/2	12.7	Serrated (Snap-on)	1.2x12.7x29	1,000	8	N/A	N/A	O
3/4	19.0	Serrated	1.2x19x40	500	8	N/A	N/A	O
1	25.0	Serrated	1.2x25x40	500	10	N/A	N/A	O

# OVR Strapping Systems

**Best Quality, Cost effective products,  
Best services for supply**

**[www.ovrpack.com](http://www.ovrpack.com)**



OVERITE INDUSTRIAL CO.LTD

*Head Office  
3RA-526 Sihwa Industrial Complex,  
1383-13 Jeongwang-dong, Siheung City  
Gyeonggi Province, 429-854 South Korea.  
Tel. +82-31-497-0366  
Fax. +82-31-498-0367  
Web site: [www.overite.co.kr](http://www.overite.co.kr)*

**OVR**  
STRAPPING SYSTEMS

**[www.ovrpack.com](http://www.ovrpack.com)**